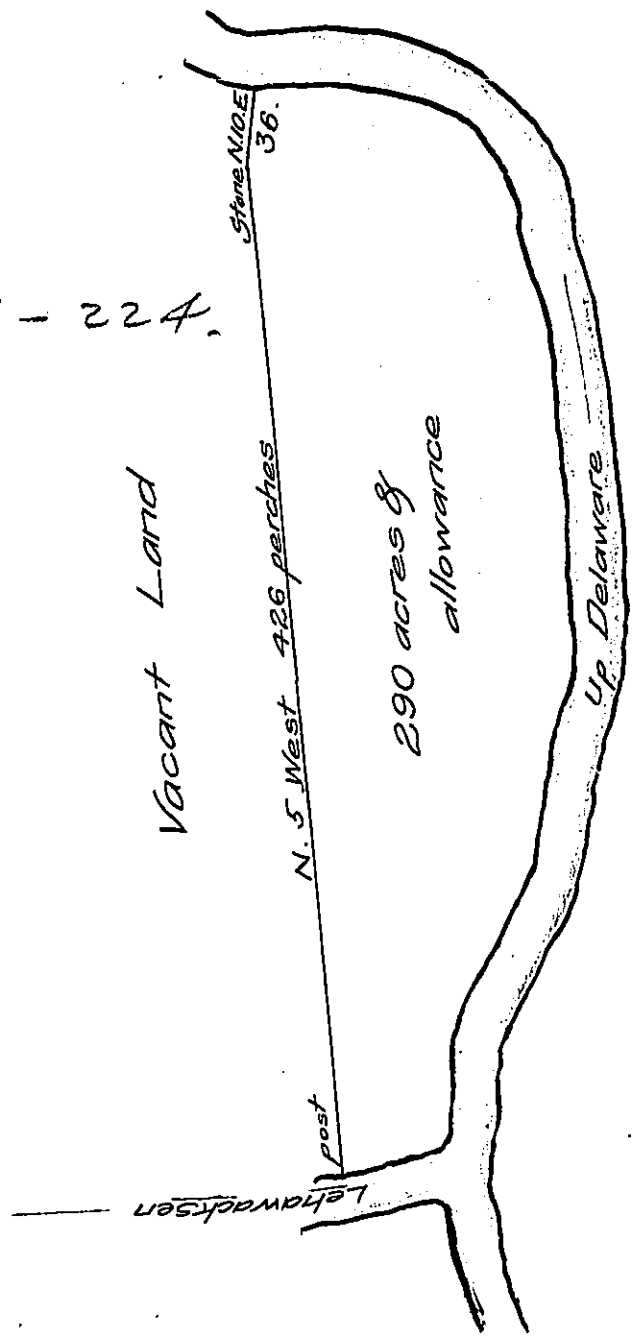


167

C-127-224.



By Virtue of an Application dated the fourth day of February 1769 Surveyd the 6th day of May 1774 unto Andrew Allen Esquire the above described Tract of Land Situate on the North Side of the Mouth of Lehawaxen Creek in the County of Northampton Cont^s 290 Acres of Land besides the Usual Allowance of Six ~~per~~ Cent for Roads &c.

John Biddle

brought to S.G. Office Feb. 22, 1775 by A. Allens Lad.

IN TESTIMONY that the above is a copy of the original remaining on file in the Department of Internal Affairs of Pennsylvania, made conformably to an Act of Assembly approved the 16th day of February, 1833, I have hereunto set my Hand and caused the Seal of said Department to be affixed at Harrisburg, this thirtieth day of April 1908.

Henry Horrell
 Secretary of Internal Affairs.